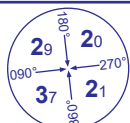


STORNOWAY

RWY 18

(ACFT CAT A,B,C,D)



MSA 25NM VOR/DME STN

APP	119.480	STORNOWAY APPROACH	AD ELEVATION 26
TWR	119.480	STORNOWAY TOWER	THR ELEVATION 16
AFIS	119.480	STORNOWAY INFORMATION	OBSTACLE ELEVATION 1233 AMSL (1217) (ABOVE THR)
ATIS	115.100	STORNOWAY INFORMATION	
			BEARINGS ARE MAGNETIC

TRANSITION ALTITUDE
3000



Arrival from AKIVO on STN R317 (QDM 137°) **not below FL75**. Request ATC approval for direct arc arrival when within STN D43. Subject to ATC approval, after passing VOR STN D28 (STW D25) descend **not below MSA**, and after passing STN D18 (IAF) continue descent to **2000**. At STW D13, turn left onto STW DME 11 arc clockwise; at lead radial NDB(L) SAY QDM 167° (VOR STN R328) turn right onto LOC/extended FAT. When established continue as for basic procedure.

Arrival on STN R224 (QDM 044°) **not below MSA**. Request ATC approval for direct arrival when within STN D30. Subject to ATC approval, after passing VOR STN D12 descend **not below 2000**. From STN D8 turn left to establish inbound to NDB(L) SAY QDM 357°. From NDB(L) SAY (IAF) at **2000**(1984) continue with appropriate procedure.

Arrival at VOR/DME STN **not below 3000** (lowest altitude to commence procedure from Hold is **3000**). Request ATC approval for direct arrival when within VOR/DME STN D30. Subject to ATC approval, after passing VOR/DME STN proceed on VOR/DME STN R002, descend to **not below 2000**. At STW D9 turn left onto the STW DME 11 arc anticlockwise; at lead radial NDB(L) SAY QDM 187° (VOR/DME STN R345) turn left on to LOC/extended FAT. When established continue as for basic procedure.

AERO INFO DATE 24FEB 23

AD 2-EGPO-8-4